

Polysafe™ Quattro

RRL Pendulum Test
50+
Sustainable Slip Resistance

P4

AS 4586



SAFETY FLOORING FOR
**BAREFOOT & SHOD,
WET & DRY**
ENVIRONMENTS.

NEXT GENERATION safety flooring

HSE Compliant
50+
Pendulum Wet Test

Sustainable Slip Resistance
throughout product's guaranteed life



**HARD
WEARING
& EASY TO
MAINTAIN**



PUR
Reinforcement



**COMMERCIAL
&
RESIDENTIAL**



**ENHANCED
SLIP RESISTANCE
50+**

Education

Designed for **HIGH RISK** environments

Polysafe Quattro has been specifically designed to provide a high degree of slip resistance whether wearing footwear or being barefoot in continually wet areas where additional contaminants such as shampoo and shower gels may be present.

The choice of floor covering in healthcare, aged care and specialist care environments can have a significant impact on the health and well-being of residents and staff. Quattro has been designed to enhance interiors, offering a practical solution where people can feel comfortable and safe. Quattro can also make a difference in education and leisure environments, where changing rooms, wet rooms, spas and pool sides require a high degree of slip resistance.

Quattro has been engineered to achieve a pendulum wet test result of 50+ (Slider 96), most importantly this performance is sustainable and assured throughout the product's guaranteed life.



Adapted Living



Healthcare



Social Housing



Leisure



SECURITY & COMFORT



Choosing the right flooring is key in promoting a more positive and inclusive environment to those living with dementia.

Designs that promote harmony and wellbeing through the creation of a sense of calm are important to resident comfort and welfare. Generating this harmonious feel is equally important whether in a residential care setting or within a person's home to support independent living. With this in mind, the Polysafe Quattro colour palette has been carefully developed.

A surface, without studs, offers superior comfort underfoot whilst maintaining high performance and safety. Residents and their carers can have confidence that their floor covering provides sustainable wet slip resistance offering protection against slips, trips and falls.

- ✓ Enhanced comfort underfoot
- ✓ Designed for residential care settings
- ✓ Safety assured
- ✓ Easy to maintain



THE COLLECTION

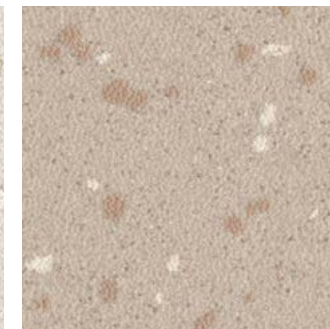
The Quattro collection draws from the calm beauty within natural environments, evoking memories of a revitalising coastal scene. The collection features warm neutrals reminiscent of sandy dunes, fresh blue shades reflecting gentle ocean waves and soothing grey tones inspired by rocky coastlines. These hues work in perfect harmony to create an ambiance of tranquillity and calmness.



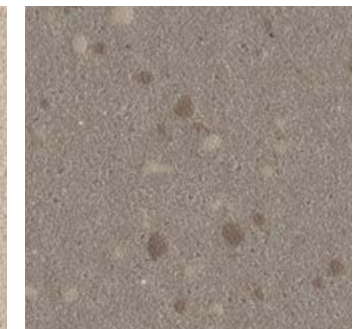
Chalk Dune 5766
NCS S 1502-Y50R
LRV 60 w/r 5766



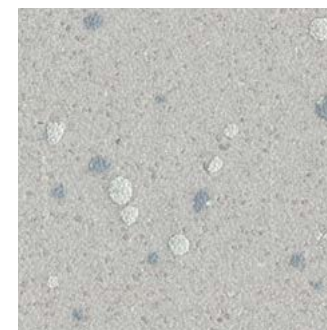
Lunar Shell 5772 ▲
NCS S 1502-Y
LRV 64 w/r 5772



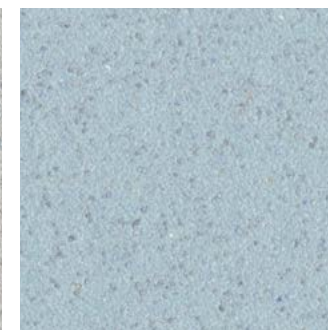
Barley Cove 5761 ▲
NCS S 3005-Y50R
LRV 47 w/r 5212



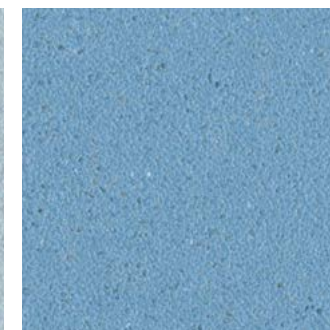
Truffle Shore 5762 ▲
NCS S 5005-Y50R
LRV 24 w/r 5762



Sea Spray 5763 ▲
NCS S 3000-N
LRV 49 w/r 5202



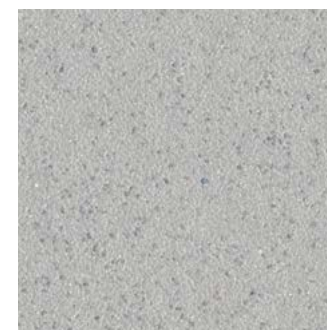
Sea Mist 5768
NCS S 2010-B
LRV 46 w/r 5205



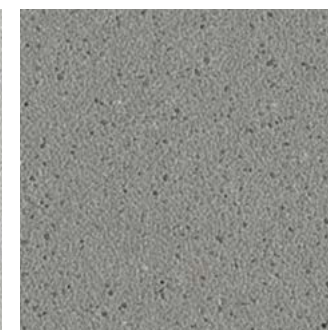
Calm Azure 5770
NCS S 2030-R90B
LRV 31 w/r 5206



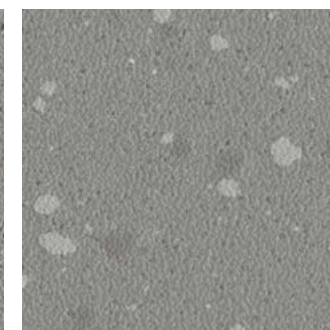
Deep Lagoon 5771
NCS S 6010-R90B
LRV 12 w/r 5207



Cool Pebble 5767
NCS S 3000-N
LRV 46 w/r 2090



Slate Haze 5773
NCS S 5000-N
LRV 26 w/r 5764



Coastal Flint 5764 ▲
NCS S 4500-N
LRV 26 w/r 5764



Granite Sky 5765 ▲
NCS S 7502-B
LRV 10 w/r 4490

▲ These colours contain a tonal chipped decoration

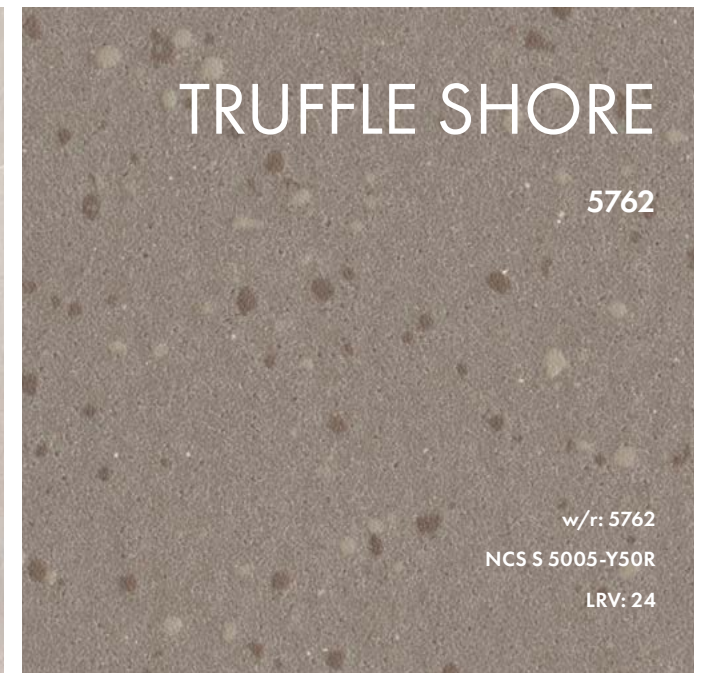


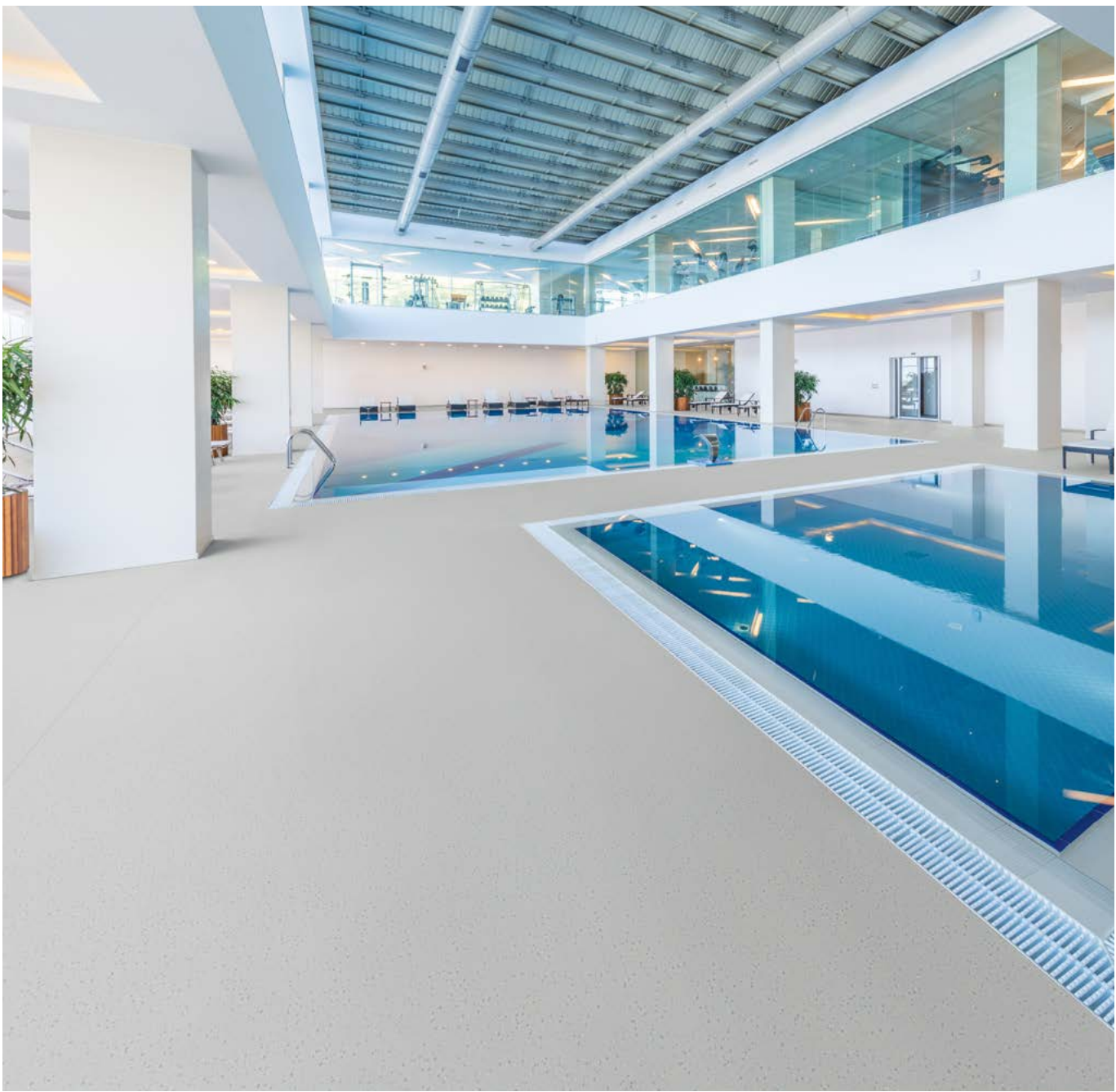
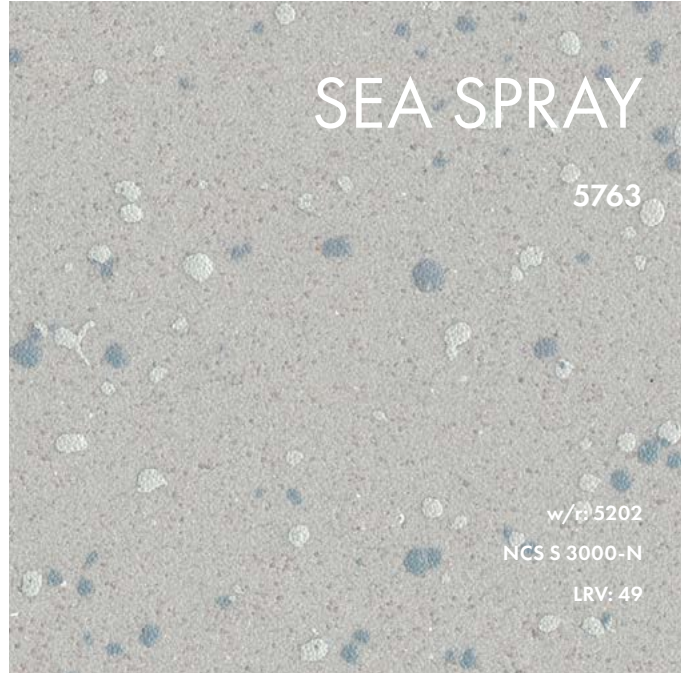
CHALK DUNE

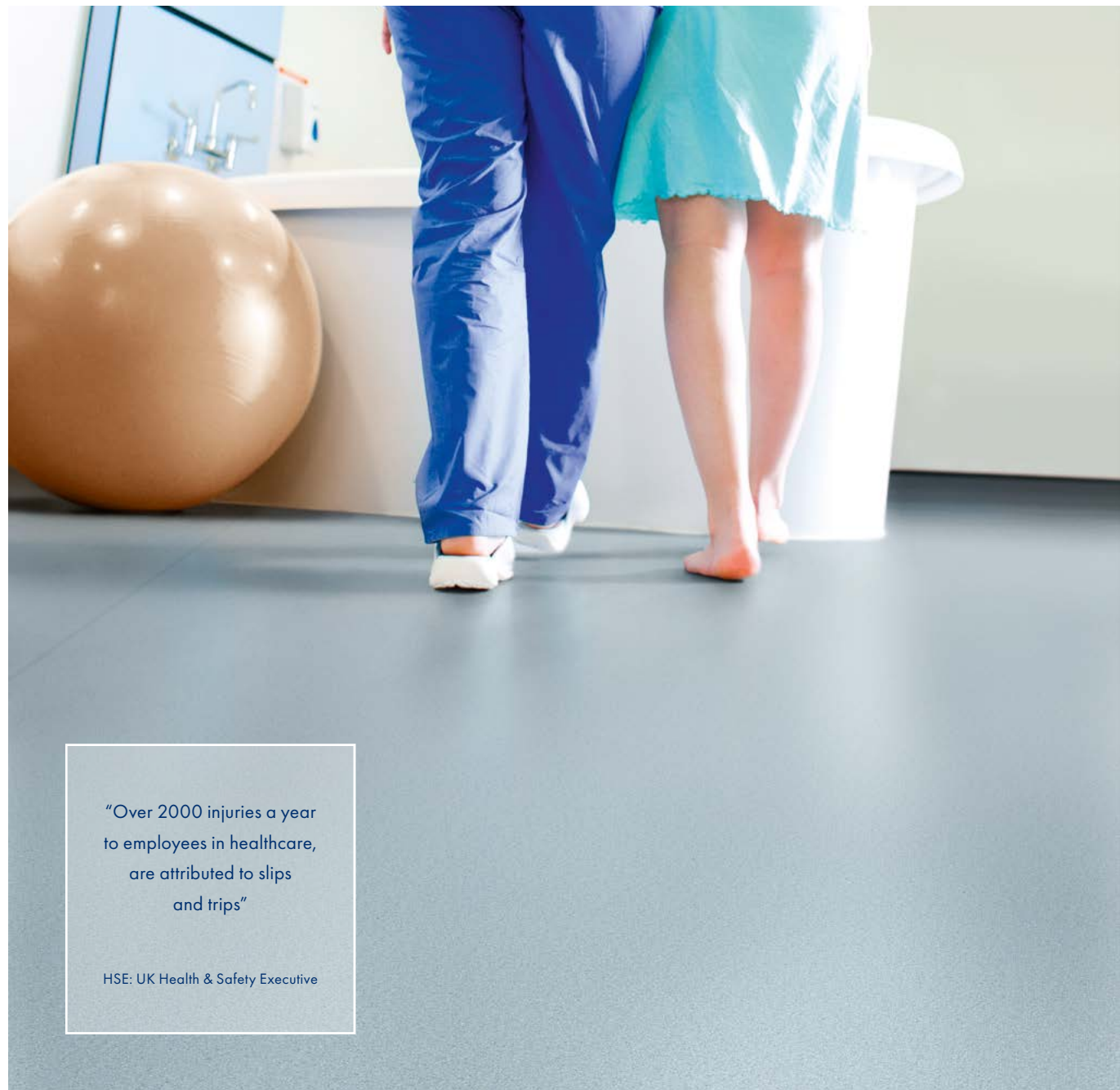
5766

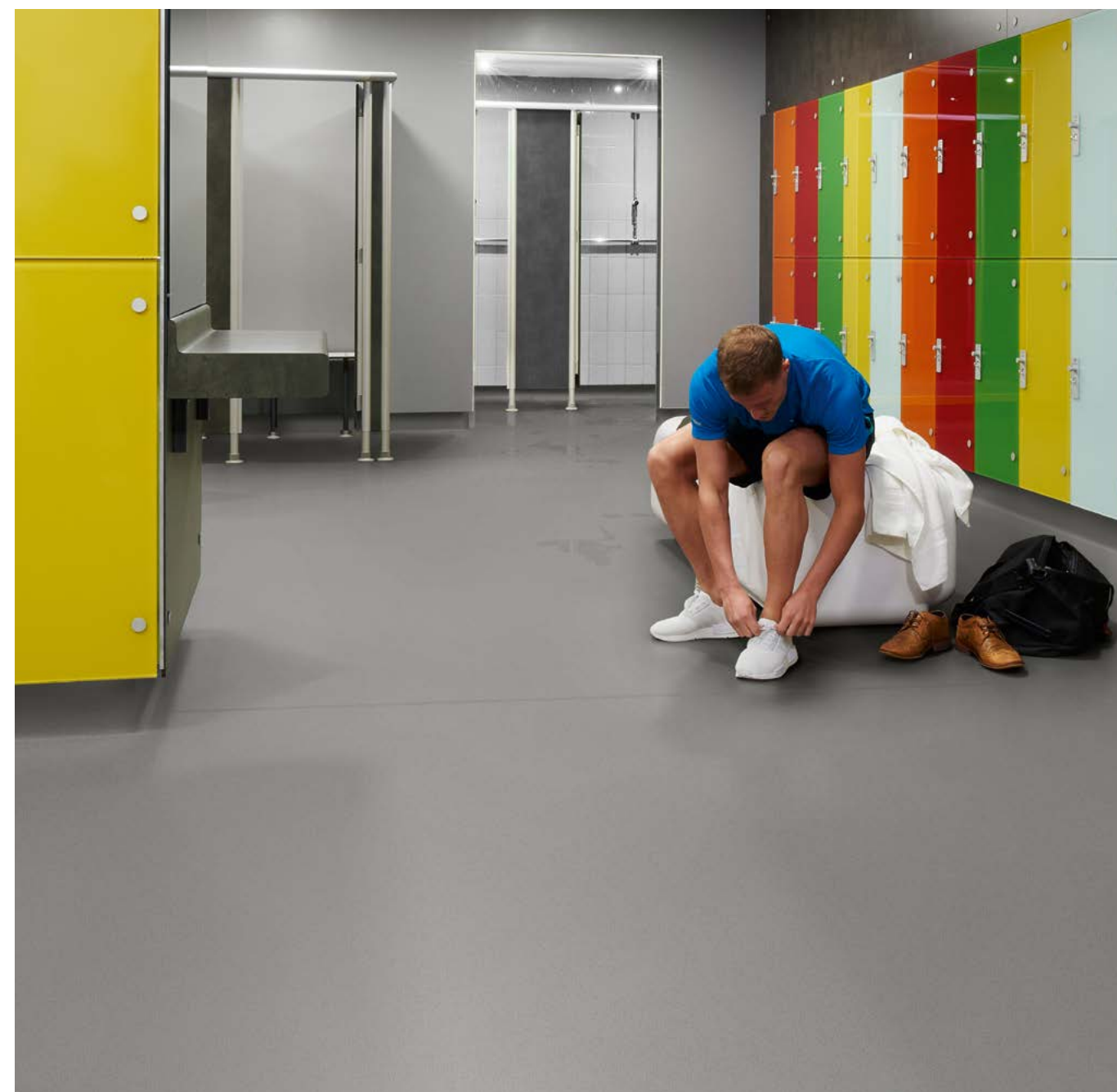
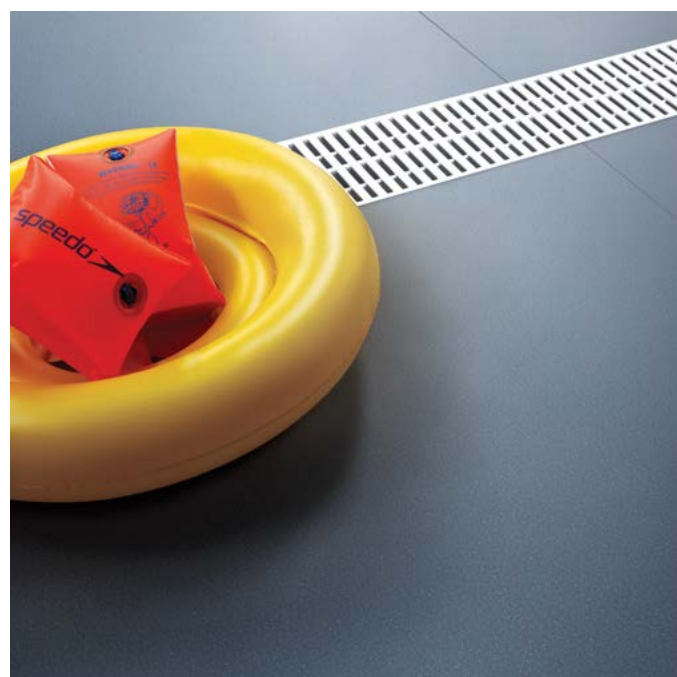
w/r 5766
NCS S 1502-Y50R
LRV: 60

Quattro is the ultimate durable choice for locker rooms and changing areas where slippery conditions caused by humidity, soap and even soil or dirt are often present.











**COMMERCIAL
& RESIDENTIAL
AREAS**

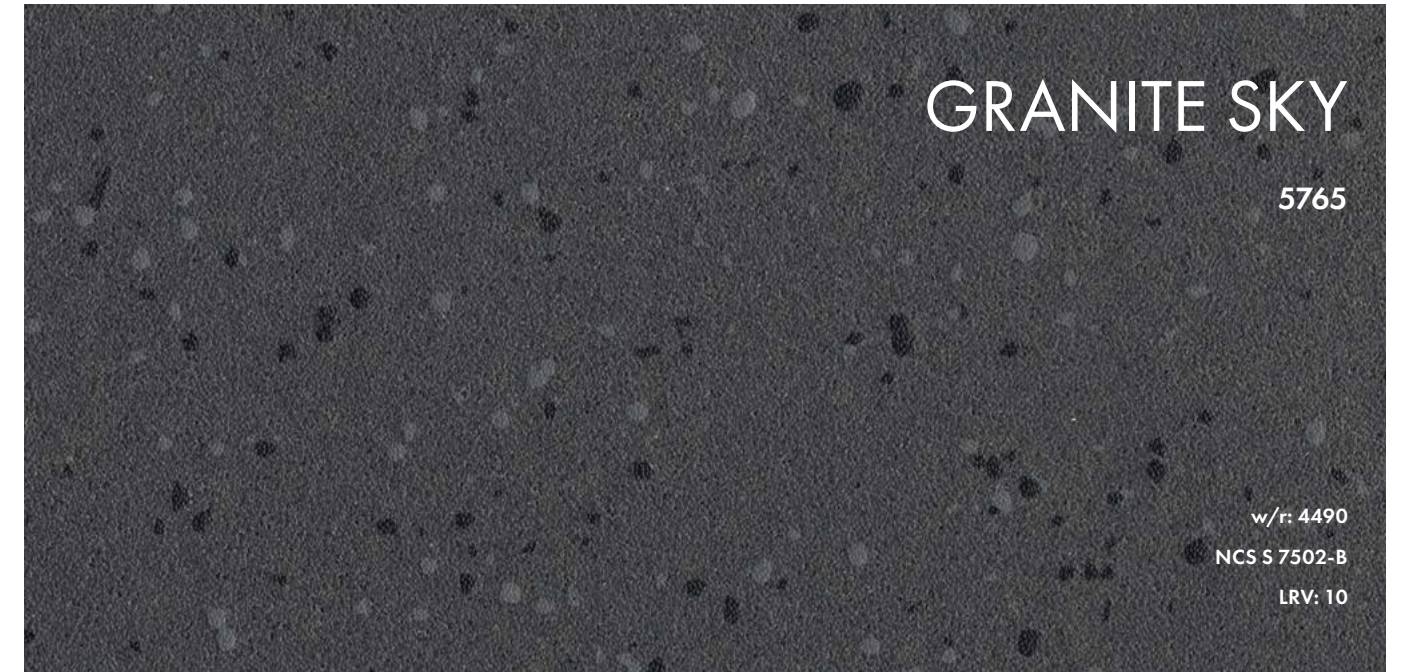
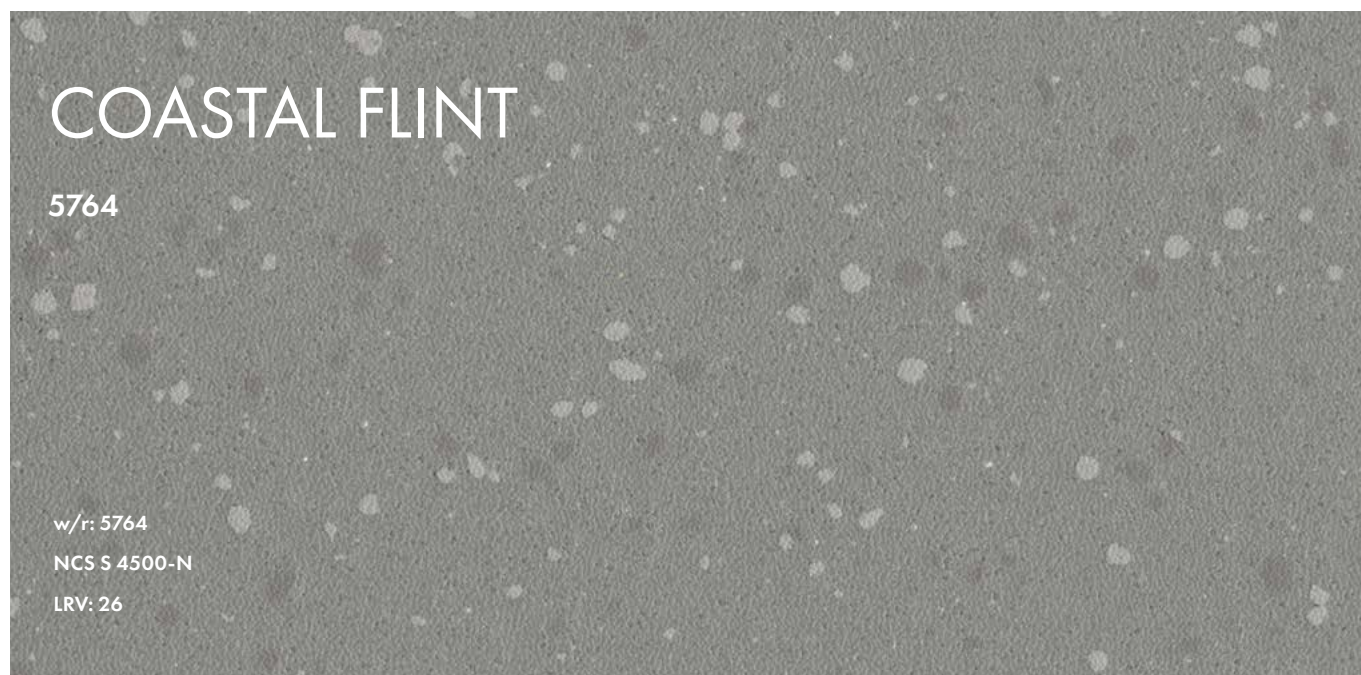
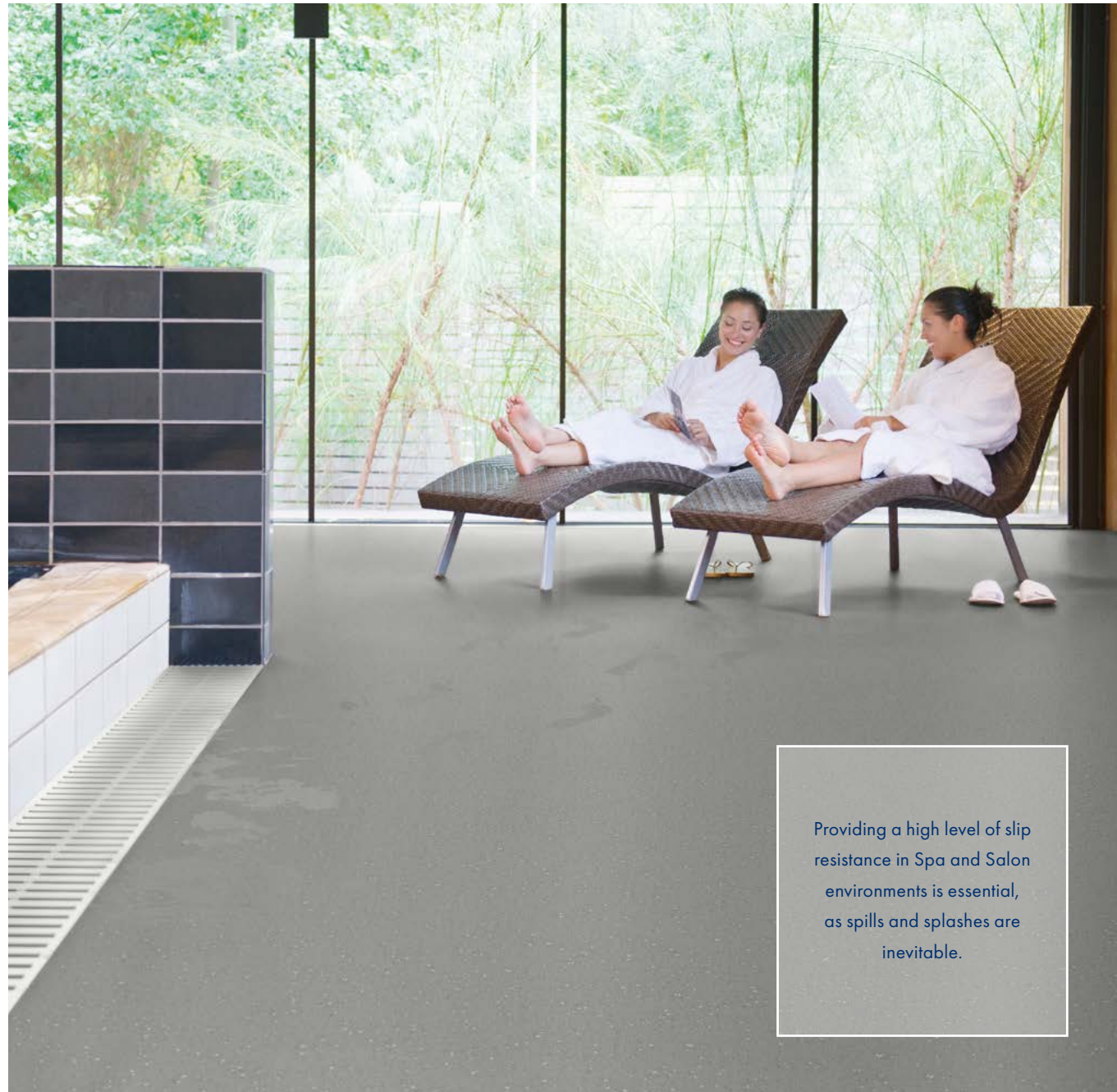
Quattro is the ideal solution
for adapted bathrooms in care
homes and residential settings.



COOL PEBBLE

5767

w/r: 2090
NCS S 3000-N
LRV: 46



RECOMMENDED FINISHES

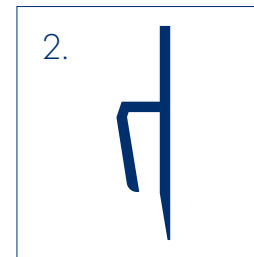
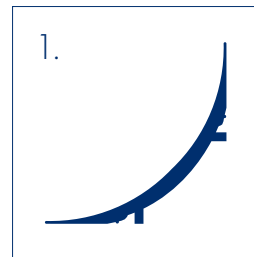
To achieve a perfect finish, it is advisable from the outset of any project to consider appropriate drainage and floor to wall detailing.

+ Watertight floor to wall finish



In continuously wet areas the appropriate floor to wall finish is equally as important as choosing the correct floor. To ensure that a watertight joint is achieved we recommend that Quattro is site-coved to the wall.

Cove formers [1] & capping strips [2] give a neat finish to the installation and ensure a continuous sealed surface.



Hygienic



Watertight



Durable



Easy to clean

+ For more information on capping or coving designs and sizes please contact us.

+ Wall Cladding



The perfect partner for Quattro

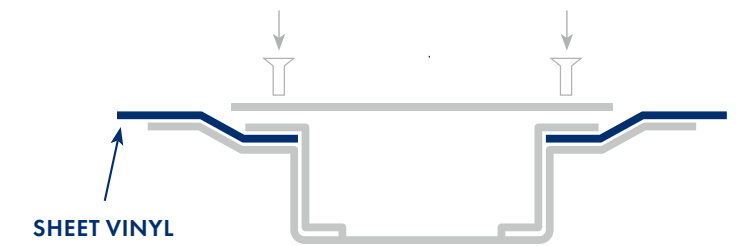
Our vinyl wall and ceiling cladding featuring a protective polyurethane surface treatment is the ideal choice for wet and hygiene critical areas.

Polyclad Pro & Plus are available in a number of subtle colours, offering an impervious floor to wall surface.

+ Drainage Systems



LINEAR DRAINS



SHEET VINYL

Only drains that have been specifically designed for use with sheet vinyl flooring should be considered in wet areas. These drains have clamping rings which prevent the ingress of water to provide a watertight finish.

The vinyl can easily be clamped between the drain's grate and build-in set to ensure a complete watertight installation.



ROUND DRAINS

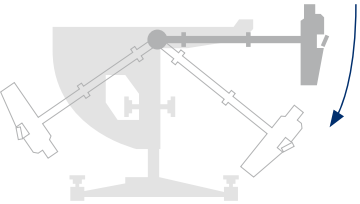
+ For more information on suitable drainage systems please contact us.

PRODUCT TESTING

As the potential for slips is higher in wet environments, it is important to choose a HSE compliant flooring solution that offers sustainable slip resistance for the product's lifetime.

✓

PENDULUM TEST



50+

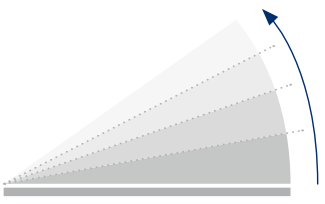
P4

Quattro achieves a test value (PTV) of **50+** (Slider 96), ensuring a low slip potential.

In Australia this result means that Quattro is **P4** rated.

✓

RAMP TEST



DIN 51130 & AS 4586

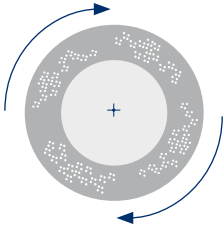
R11

DIN 51097 & AS 4586

CLASS B

✓

50,000 CYCLES TEST



EN 13845

The European safety flooring standard

Conformance to the 50,000 cycles abrasion test demonstrates that the performance particles within a safety floor are durable, offering longevity and sustainable performance for the guaranteed life of the product.

PUR


TECHNOLOGY

✓ Easy clean

















✓ Maintain cost savings


✓ Optimum appearance retention

✓ Resistance to staining & chemicals




TECHNICAL SPECIFICATION


	Gauge	EN 428/ISO 24346	2.0mm
	Roll Size	EN 426/ISO 24341	2m x 20m = 40m²
	Total Weight	EN 430/ISO 23997	2700g/m²
	General Performance	EN 13845 ASTM F1303	Conforms Conforms
	Use Area	EN 685/ISO 10874	  
	Resistance to Chemicals	EN 423	Good chemical resistance
	Water Tightness	EN 13553	Annex A
	Reaction to Fire	EN 13501-1 ASTM E648 Australian BCA Spec C.1.10-3	Class Bfl-S1 Class 1 Complies
	Abrasion Resistance	EN 13845 EN 649	50,000 cycles Group T
	Enhanced Slip Resistance	EN 13845 AS 4586 Appendix A AS 4586 Appendix C AS 4586 Appendix D DIN 51097 DIN 51130 RRL Pendulum Test Surface Roughness	ESb & ESf P4 Class B R11 Class B R11 ≥50 (wet test - 4S Rubber/Slider 96) Rz ≥20µm
	The slip resistance across all Polysafe products is sustainable throughout the guaranteed life of the product, with strict adherence to HSE Guidelines. For further clarification regarding slip resistance, consult Polyflor.		
	Electrical behaviour (body voltage)	EN 1815	≤2kV Classified as 'antistatic'
	VOC Emissions	AgBB VOC test Floorscore Finnish M1 Classification	Pass Certified Certified
	Environmentally Preferable Flooring - Polysafe Quattro PUR achieves BRE Global Environmental Generic A+ rating in major use areas such as education and healthcare. Generic EN 15804 Environmental Product Declaration (EPD) available on request. It is 100% recyclable and contains recycled material. Recyclable via the Recofloor scheme. Visit www.polyflor.com/sustainability .		
	Polysafe PUR - Polysafe Quattro PUR features a high quality, cross-linked polyurethane reinforcement, UV cured to provide superior cleaning benefits, life cycle maintenance savings and optimum appearance retention. As with all Polysafe products, Polysafe Quattro PUR should not have a polish applied.		
	Hygiene - All Polyflor commercial sheet vinyl ranges provide a continuous, impervious and hygienic flooring solution which can be confidently cleaned in accordance with recommended maintenance procedures and approved maintenance products. The implementation of an effective cleaning regime is the most important defence against infection.		
	Polysafe safety flooring ranges have good resistance to dilute acids and alkalis, are compatible for use with the most commonly used alco-based hand gels and are suitable for steam cleaning on a periodic basis. Chemical resistance charts available on request. For information regarding handling and installation, adhesives, maintenance, applications, chemical resistance and product warranty, consult Polyflor Customer Technical Services on +44 (0)161 767 1912 , or email tech@polyflor.com .		
	The data presented is correct at the time of printing. For latest information, please visit our website polyflor.com . This product contains a blend of quartz particles in various colours within the vinyl to impart the required sustainable slip resistance. Decoration and shade may vary slightly from the samples shown.		




100% RECYCLABLE
CONTAINS RECYCLED MATERIAL




A+ BRE
GENERIC ENVIRONMENTAL RATING




EPD
ENVIRONMENTAL PRODUCT DECLARATION




Recofloor
Vinyl Take-Back Scheme




floor score
OPTIMUM APPEARANCE




POLYSAFE
PUR
OPTIMUM APPEARANCE




UP TO
60%
MAINTENANCE COST SAVING




NBS
BIM




NBS Plus



CE
EN 14041



SGS



SGS

For more information regarding our recommended safety flooring finishes or product testing please contact our Customer Technical Services Department on +44 (0)161 767 1912 or email tech@polyflor.com
Alternatively please visit polyflor.com/safety

26 | Polysafe Quattro

27



POLYFLOR™ INTERNATIONAL

Australia

Polyflor Australia
Tel: 1800 777 425
E-mail: sales@polyflor.com.au

Canada

Polyflor Canada Inc.
Tel: +1 905 364 3000
E-mail: sales@polyflor.ca

China

Polyflor Hong Kong
Tel: +(852) 2865 0101
E-mail: info@polyflor.com.hk

France

James Halstead France SAS
Tel: +33 (0) 8 20 20 32 11
E-mail: info@jhfrance.fr

Germany

objectflor Art und Design Belags GmbH
Tel: +49 (0) 2236 966 330
E-mail: info@objectflor.de

India

Polyflor India Pvt Ltd
Tel: +91 22 4023 2485
E-mail: info@polyflor.co.in

Ireland

Polyflor Ireland
Tel: +353 (1) 864 9304
E-mail: salesireland@polyflor.com

New Zealand

Polyflor New Zealand Ltd
Tel: 0800 765 935
E-mail: sales@polyflor.co.nz

Norway

Polyflor Nordic
Tel: +47 23 00 84 00
E-mail: firmapost@polyflor.no

Poland

Polflor Sp. Z o.o.
Tel: +48 (0) 61 820 3155
E-mail: polyflor@polflor.com.pl

South Africa

Poly Sales Africa (Pty.) Ltd
Tel: +27 (0) 11 609 3500
E-mail: info@polyflor.co.za

Sweden

FalckDesign AB
Tel: +46 (0) 300 15820
E-mail: info@falckdesign.com

POLYFLOR™ UK

Polyflor Ltd. PO Box 3, Radcliffe New Road,
Whitefield, Manchester, M45 7NR

UK Sales Direct: +44 (0) 161 767 1122
UK Samples Direct: +44 (0) 161 767 2551
Export Sales Direct: +44 (0) 161 767 1913
Technical Support: +44 (0) 161 767 1912
E-mail: info@polyflor.com

polyflor.com/safety